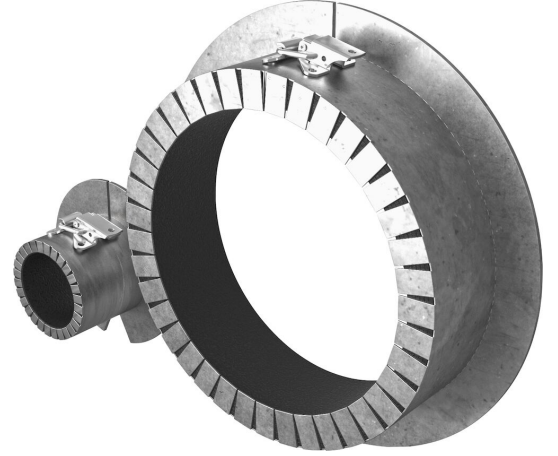




Roxtec Sleeve-it™ yangın geçiş yalıtım malzemesi

Tek plastik borular için yangın geçiş yalıtım malzemesi.

Roxtec Sleeve-it™ Yangın geçiş yalıtım malzemesi yangın dereceli bölümlerdeki tek plastik borular için hafif, açılabilir çözümdür. Geçiş yapıya doğrudan çiviyle kaynaklıdır ev manşona gerek yoktur. Paslanmaz çelik kasa plastik boru yumuşamaya başladığında geçişi korumak için yangının sıcaklığına reaksiyon gösteren ısı ile genişleyen malzeme katmanları içerir. Geçiş yalıtım malzemesi açılabilir ve boru sisteminden sonra monte edilebilir ve bu özelliği sayesinde yenileme projeleri için idealdir.



- Hafif
- Yüzeyi verimli kullanır
- Hızlı ve kolay montaj

Ürün özellikleri



Yangın sınıflamalı

Montaj yapılacak yapı



Metal

Montaj tipi



Kaynak

Derecelendirmeler ve sertifikalar

Yangın

- IMO 2010 FTP Koduna göre A-SINIFI
- IMO 2010 FTP Koduna göre B-SINIFI

Yalıtım elemanı verileri

Yalıtım elemanları



Sleeve-it™ Yangın geçiş yalıtım malzemesi

Aksesuarlar



yangın mastiği

Ayrıntılı bilgi için lütfen [roxtec.com](https://www.roxtec.com) adresini ziyaret edin.



Önceden yapılandırılmış geçiş kitleri

mm/kg



SLEEVE-IT FC-MAR225M



SLEEVE-IT FC-MAR32M



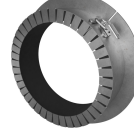
SLEEVE-IT FC-MAR75M
ALU



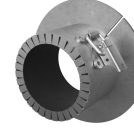
SLEEVE-IT FC-MAR63M
ALU



SLEEVE-IT FC-MAR110M
ALU



SLEEVE-IT FC-MAR160M



SLEEVE-IT FC-MAR60M
(2")



SLEEVE-IT FC-MAR25M
ALU



SLEEVE-IT FC-MAR219M
ALU (8")



SLEEVE-IT FC-MAR90M
ALU (3")



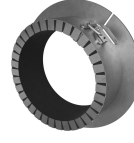
SLEEVE-IT FC-MAR219M
(8")



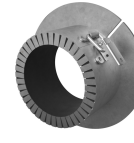
SLEEVE-IT FC-MAR40M
ALU



SLEEVE-IT FC-MAR140M
ALU



SLEEVE-IT FC-MAR125M



SLEEVE-IT FC-MAR82M



SLEEVE-IT FC-MAR169M
(6")



SLEEVE-IT FC-MAR20M



SLEEVE-IT FC-MAR16M



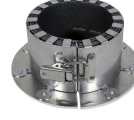
SLEEVE-IT FC-MAR90M
(3")



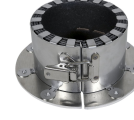
SLEEVE-IT FC-MAR110M



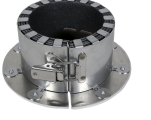
SLEEVE-IT FC-MAR140M



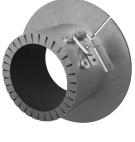
SLEEVE-IT FC-MAR60M
ALU (2")



SLEEVE-IT FC-MAR115M
ALU (4")



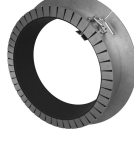
SLEEVE-IT FC-MAR125M
ALU



SLEEVE-IT FC-MAR50M
(1.5")



SLEEVE-IT FC-MAR25M



SLEEVE-IT
FC-MAR200M



SLEEVE-IT FC-MAR75M



SLEEVE-IT FC-MAR66M



SLEEVE-IT FC-MAR160M
ALU



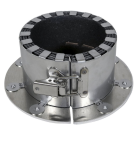
SLEEVE-IT FC-MAR50M
ALU (1.5")



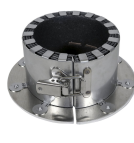
SLEEVE-IT FC-MAR66M
ALU



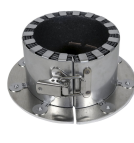
SLEEVE-IT FC-MAR115M
(4")



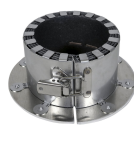
SLEEVE-IT FC-MAR225M
ALU



SLEEVE-IT FC-MAR169M
ALU (6")



SLEEVE-IT FC-MAR82M
ALU



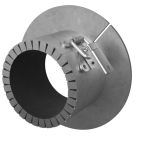
SLEEVE-IT FC-MAR200M
ALU



SLEEVE-IT FC-MAR32M
ALU



SLEEVE-IT FC-MAR40M



SLEEVE-IT FC-MAR63M



SLEEVE-IT FC-MAR16M
ALU



SLEEVE-IT FC-MAR20M
ALU



Başlık	Konfigürasyon	Açıklık boyutları Ø	Ağırlık	Madde Numarası
SLEEV-IT FC-MAR225M		227 - 235	2.1	106280
SLEEV-IT FC-MAR32M		34 - 42	0.17	106249
SLEEV-IT FC-MAR75M ALU		79 - 85	0.4	151288
SLEEV-IT FC-MAR63M ALU		67 - 73	0.4	151287
SLEEV-IT FC-MAR110M ALU		112 - 120	0.7	151290
SLEEV-IT FC-MAR160M		162 - 170	1.3	106271
SLEEV-IT FC-MAR60M (2")		62 - 70	0.4	106255
SLEEV-IT FC-MAR25M ALU		29 - 35	0.17	151282
SLEEV-IT FC-MAR219M ALU (8")		223 - 229	1.6	151297
SLEEV-IT FC-MAR90M ALU (3")		93 - 99	0.5	151289
SLEEV-IT FC-MAR219M (8")		221 - 229	2	106278
SLEEV-IT FC-MAR40M ALU		44 - 50	0.22	151284
SLEEV-IT FC-MAR140M ALU		144 - 150	1	151293
SLEEV-IT FC-MAR125M		127 - 135	0.9	106267
SLEEV-IT FC-MAR82M		84 - 92	0.6	117919
SLEEV-IT FC-MAR169M (6")		170 - 178	1.4	106273
SLEEV-IT FC-MAR20M		22 - 30	0.13	106245
SLEEV-IT FC-MAR16M		18 - 26	0.11	106239
SLEEV-IT FC-MAR90M (3")		91 - 99	0.7	106261
SLEEV-IT FC-MAR110M		112 - 120	0.8	106263
SLEEV-IT FC-MAR140M		142 - 150	1	106269
SLEEV-IT FC-MAR60M ALU (2")		64 - 70	0.3	151286
SLEEV-IT FC-MAR115M ALU (4")		118 - 124	0.7	151291
SLEEV-IT FC-MAR125M ALU		129 - 135	0.8	151292
SLEEV-IT FC-MAR50M (1.5")		50 - 58	0.36	106253
SLEEV-IT FC-MAR25M		27 - 35	0.14	106247
SLEEV-IT FC-MAR200M		202 - 210	1.9	106275
SLEEV-IT FC-MAR75M		77 - 85	0.6	106259
SLEEV-IT FC-MAR66M		68 - 76	0.5	117916
SLEEV-IT FC-MAR160M ALU		164 - 170	1	151294
SLEEV-IT FC-MAR50M ALU (1.5")		52 - 58	0.3	151285
SLEEV-IT FC-MAR66M ALU		68 - 76	0.4	153747
SLEEV-IT FC-MAR115M (4")		116 - 124	0.8	106265
SLEEV-IT FC-MAR225M ALU		229 - 235	1.7	151298
SLEEV-IT FC-MAR169M ALU (6")		172 - 178	1.1	151295
SLEEV-IT FC-MAR82M ALU		86 - 92	0.5	153748
SLEEV-IT FC-MAR200M ALU		204 - 210	1.5	151296
SLEEV-IT FC-MAR32M ALU		36 - 42	0.2	151283
SLEEV-IT FC-MAR40M		42 - 50	0.21	106251
SLEEV-IT FC-MAR63M		65 - 73	0.41	106257
SLEEV-IT FC-MAR16M ALU		20 - 26	0.2	151280
SLEEV-IT FC-MAR20M ALU		24 - 30	0.16	151281

The product information provided by Roxtec does not release the purchaser of the Roxtec system, or part thereof, from the obligation to independently determine the suitability of the products for the intended process, installation and/or use.

Roxtec gives no guarantee for the Roxtec system or any part thereof and assumes no liability for any loss or damage whatsoever, whether direct, indirect, consequential, loss of profit or otherwise, occurred or caused by the Roxtec systems or installations containing components not manufactured by an authorized manufacturer and/or occurred or caused by the use of the Roxtec system in a manner or for an application other than for which the Roxtec system was designed or intended.

Roxtec expressly excludes any implied warranties of merchantability and fitness for a particular purpose and all other express or implied representations and warranties provided by statute or common law. User determines suitability of the Roxtec system for intended use and assumes all risk and liability in connection therewith. In no event shall Roxtec be liable for indirect, consequential, punitive, special, exemplary or incidental damages or losses.

The Roxtec products are offered and sold in accordance with the conditions of the Roxtec General Terms of Sales. The latest version of the Roxtec General Terms of Sales can be downloaded from <https://www.roxtec.com/en/about-us/about-roxtec/general-terms-of-sales/>

We reserve the right to make changes to the product and technical information without further notice. Any errors in print or entry are no claims for indemnity. The content of this publication is the property of Roxtec International AB and is protected by copyright.

This document was generated on: 2024-04-23